

1. Improving Auto Focus (AF) performance

Improving Auto Focus (AF) performance
Improving stability of AF and added “AF sensitivity” and “Face only AF” function.

Added “AF sensitivity “ Menu




Camera function > AF Sensitivity
Setting response sensitivity of AF in accordance with changing subject
[Setting value : High , Middle (Default) , Low]

Added “Face Only AF” Menu
Assignable “Face Only AF” function to User Button

Camera Function > User button setting > Face Only AF
[Setting Value : On , OFF (Default)

Memo
ON : Displayed Face Only AF icon and AF works only when face is detected
When face is not detected AF is changed to MF

アイコン表示(Face Detect=ON)

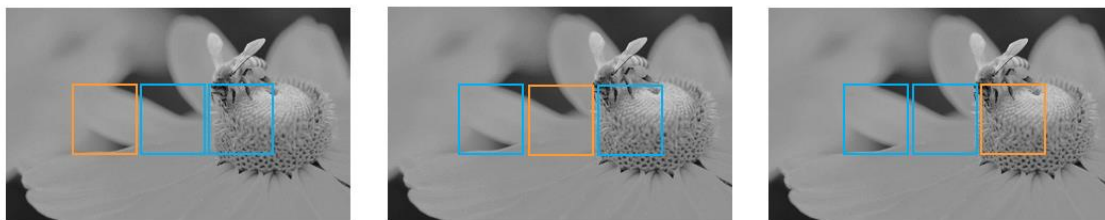
Face Only AF	Status(Face Detect)	
OFF	-	
ON	Not Detect	
ON	Detected	

Expanded selectable range of AF Assist (Aea)

Camera Function > AF Assist

In case of setting “Area” , Range of selectable detecting AF becomes 15 steps from 3 steps.

< Before > 3 square area displayed , Orange colored square frame showing selected detection area
Others are blue colored.



< After > Selected detection area is only displayed. Range of detection area becomes wider from left end to right end 15steps.



2. Improving Image stabilization performance

Added DIS (Digital Image Stabilizer) to OIS (Optical Image Stabilizer) ,and improved Image Stabilization performance.

Revised menu

(1) OIS setting

Camera Function > OIS [Setting Value: High, Normal (Default) . OFF]

Also changed by pressing assigned User Button

(2) OIS level menu is deleted

(3) Added "Use with DIS " [Setting Value: ON,OFF(Default)]

Memo

- Icon is changed by setting
- When shooting with tripod and shooting subject with little movement, recommended setting is OIS Off and Use with DIS off.
- DIS works most effectively at faster shutter speed than 1/250
- When setting Full Auto, Shutter speed is set to the optimum value.
When setting 4K or HighSpeed , DIS cannot work, Setting is fixed Off. OIS can be used.
- When setting Use with DIS On , Angle of view of wide end will be narrower.
(Wide 29.6mm ➔ 34.8mm , Zoom position 0 ➔ 10)

	Menu Settings		Icon
	OIS	Use with DIS	
Anti-vibration	Off	Off	(None)
		On	
Normal	Normal	Off	
	High		
	Normal	On	
	High		
Highest			

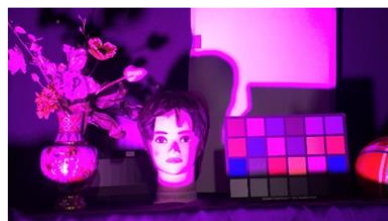
3. Automatic correction of color matrix under LED light

Improved Auto Color Matrix Adjustment reproduce natural video images under strong single wave length light like LED light at “Full Auto” function is ON.

V0200 Improved



Previous version



4. Improved Full Auto setting

Improved Full auto performance , added automatic optimizing factors and menu items

When setting Full auto, following items is optimized by camera unit
And “—” is displayed

Camera Setting >

(1) AGC Limit

- (2) EEI Limit
- (3) Auto Iris (Open)
- (4) Auto Iris (Close)
- (5) Fricker Correction

Revised default setting

- (1) Auto Iris (Close) Camera Function > Auto Iris
[Setting Value : F4,F5.6 F8 (Default), F11]
- (2) ND Assist LCD/VF Setting > Display settings > ND Filter
[Setting Value: ON + Assist (Default) , On , Off]

Memo

LCD/VF Setting > Display settings > ND Filter > On + Assist
With this setting , Recommended ND filter setting is displayed

5. Added Remote Zoom ease function.

Added Remote Zoom ease function. With wired remote controller, setting Zoom movement, Acceleration of movement and speed and stop.

[Camera Function] >>[Zoom...] >> [REMOTE Zoom Ease]

"REMOTE Zoom Ease" Added setting value [Setting Value : Off (Default)、1、2]

- Off: Ease operation Off
- 1: Ease operation
- 2: Ease operation, Max speed is around half of 1:

<Memo>

When use quick Zoom from Remote controller, ease zoom will be cancelled and be done normal zoom operation. Some remote controller may not be cancelled with quick Zoom.





When select "SW Set" , Zoom speed SW keep original function.

6. Added short cut on Software keyboard

Added short cut button of function key on Software keyboard.

Push the user button to use assigned function.



-  LOLUX/3 Move input position to the left
-  C.REVIEW/4 Move input position to the Right
-  ZEBRA/5 Delete 1 character
-  OIS/6 Change character type