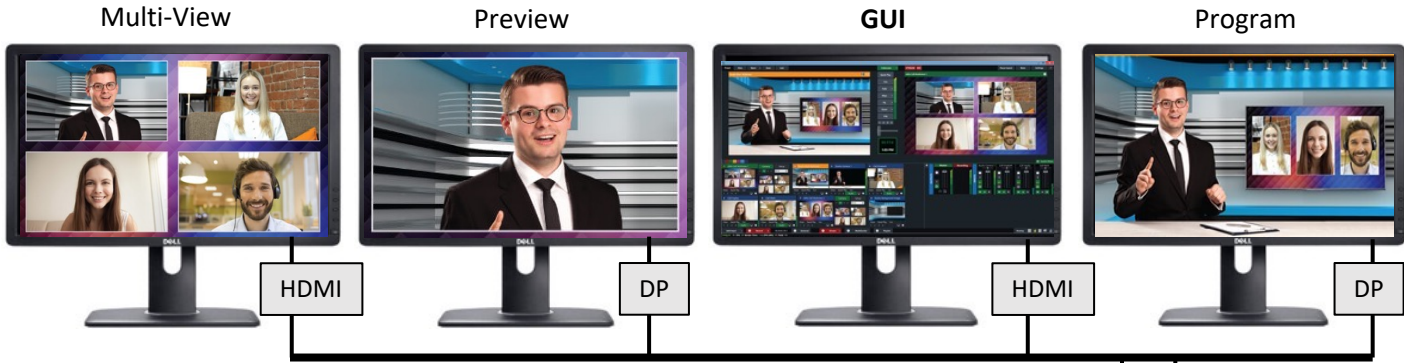


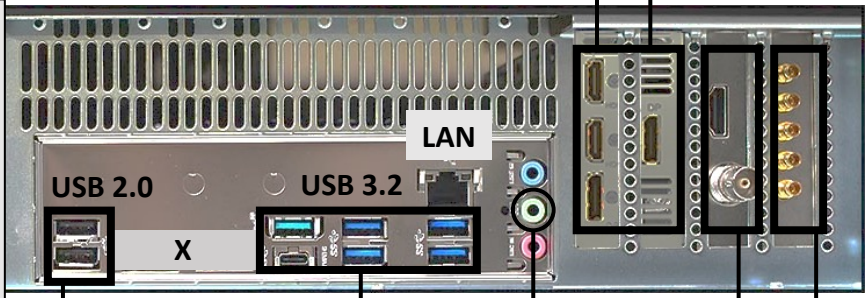
**In the box:**

# KM-IP8/S4

- KM-IP8/S4 - 2U high-performance PC
- Power cord
- Keyboard, Mouse
- 4 x Din 1.0/2.3 to BNC Female cables (S4 only)

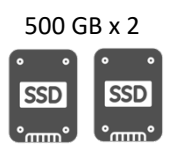
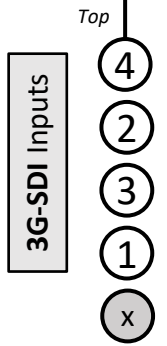
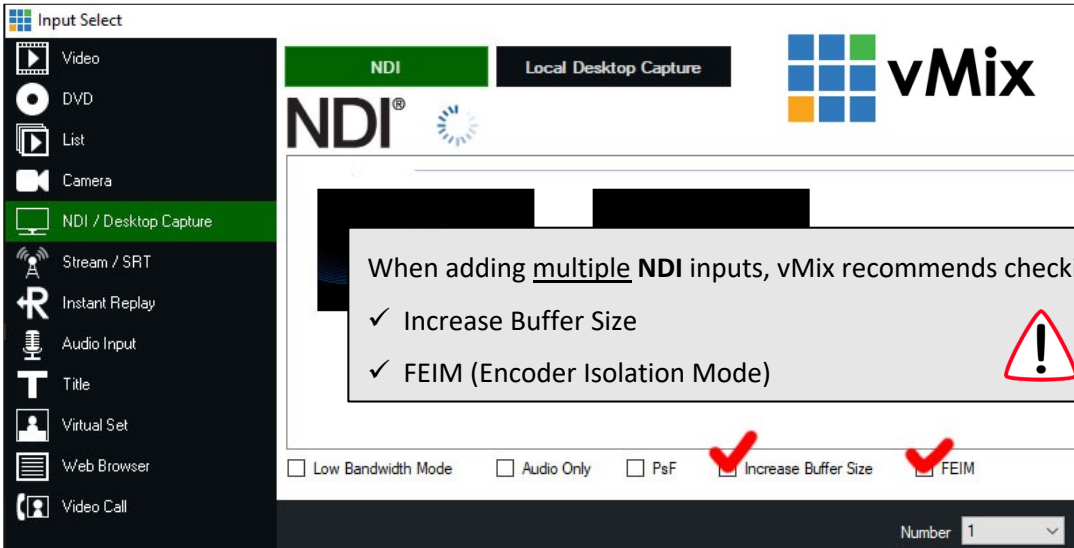


- vMix supports up to 4 displays:**
1. GUI (required)
  2. Program } optional
  3. Preview } or any Input
  4. Multiview }

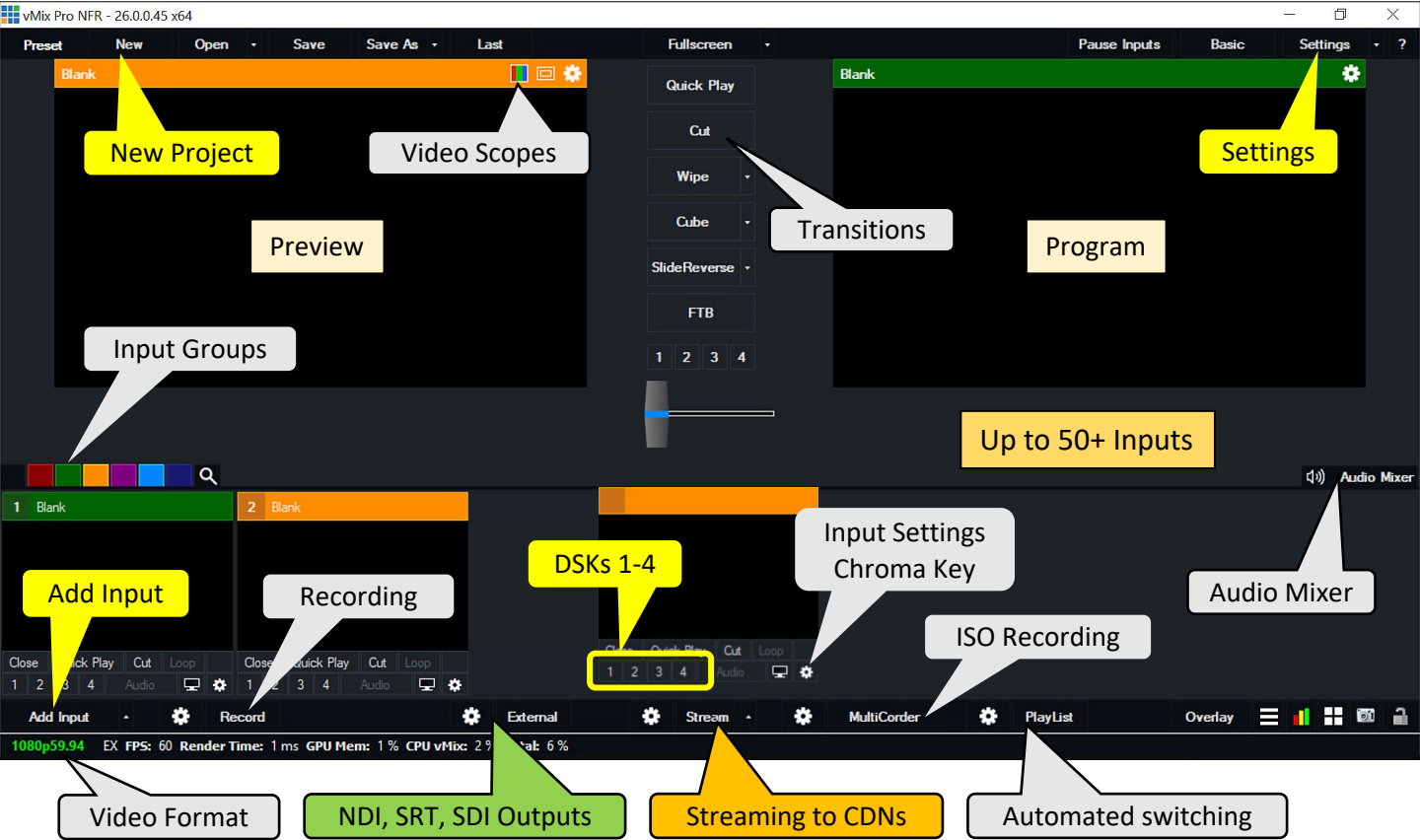


- ✓ RM-LP350
- ✓ Audio ADC
- ✓ Audio Mixer
- ✓ External SSD

- Output:
- ✓ 3G-SDI
  - or
  - ✓ HDMI

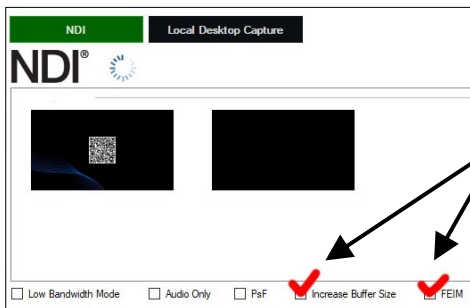
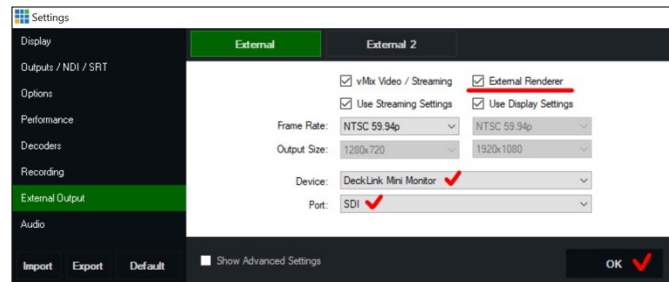
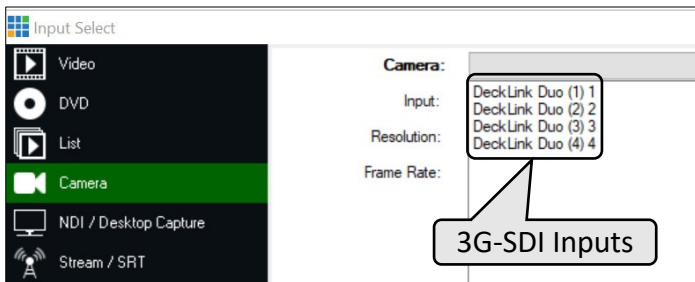


The KM-IP8/S4 hardware supports 50+ inputs including 4 x 3G-SDI (S4 only) and up to 8 x 1080 60p NDI inputs for live cameras. vMix 4K license (installed) allows up to 1,000 inputs but this reference configuration "Ruby" is recommended for 1080 60p production with up to 50 inputs including up to 12 live cameras. Every input can be configured as a live camera, video clip, audio, animated title, replay, virtual set, etc. Four (4) down-stream keys (DSK) provide instant overlay of any input on program output. Each input can also be "sandwiched" with up to 10 layers/inputs of overlay. All inputs support chroma key.



Adding 3G-SDI inputs

Configure 3G-SDI output



When adding multiple NDI inputs, vMix recommends checking:

- ✓ Increase Buffer Size
- ✓ FEIM (Encoder Isolation Mode)

Product Support contact information:  
 JVC Pro Video (866)582-8723 proinfo@jvc.com