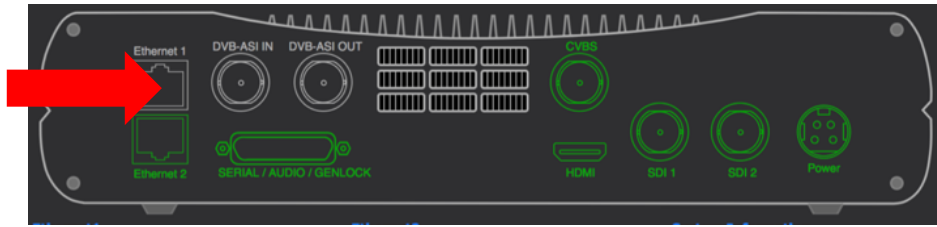
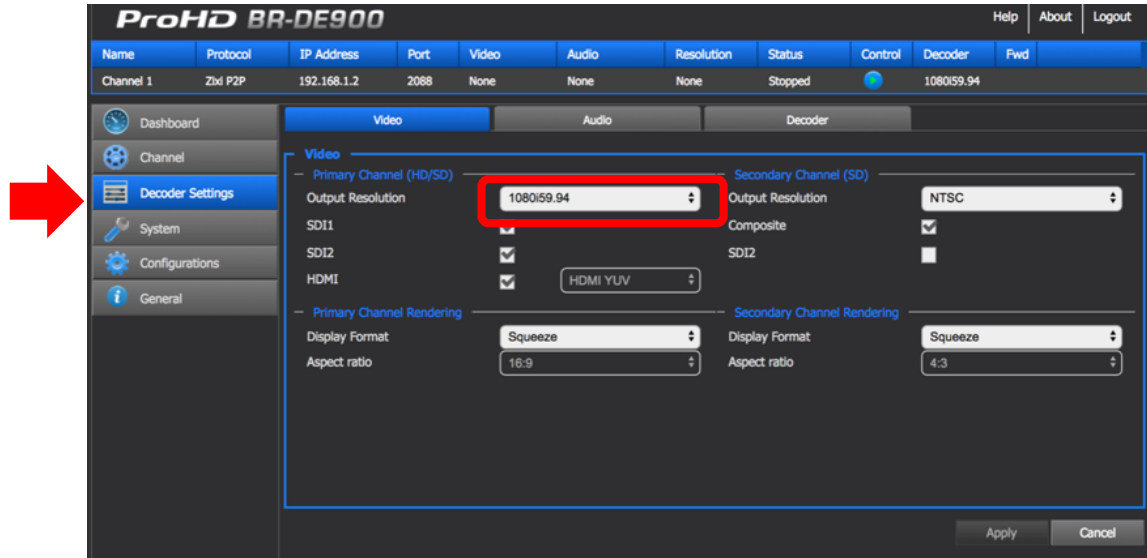


# BR-DE900 Decoder Setup:

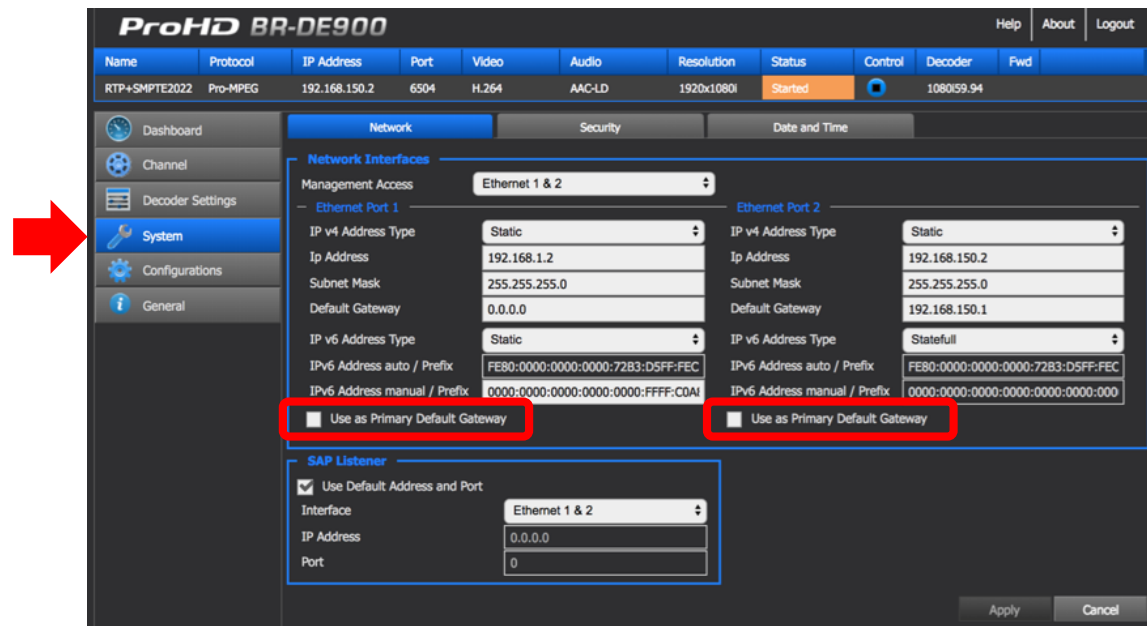
Connect to Eth1 192.168.1.2 jvc1234



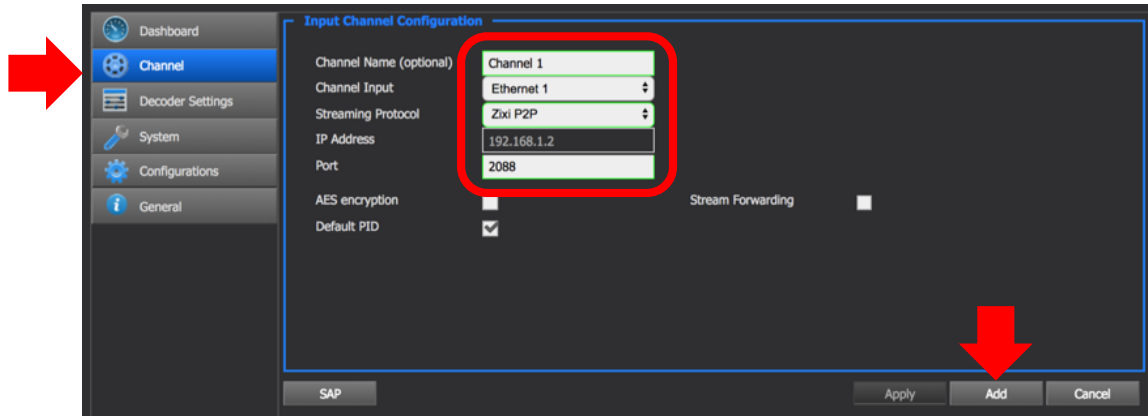
Setup Video Output format according to country / display standard 720/1080 50/60Hz



Verify network settings. Set *Primary Default Getaway* for the streaming interface



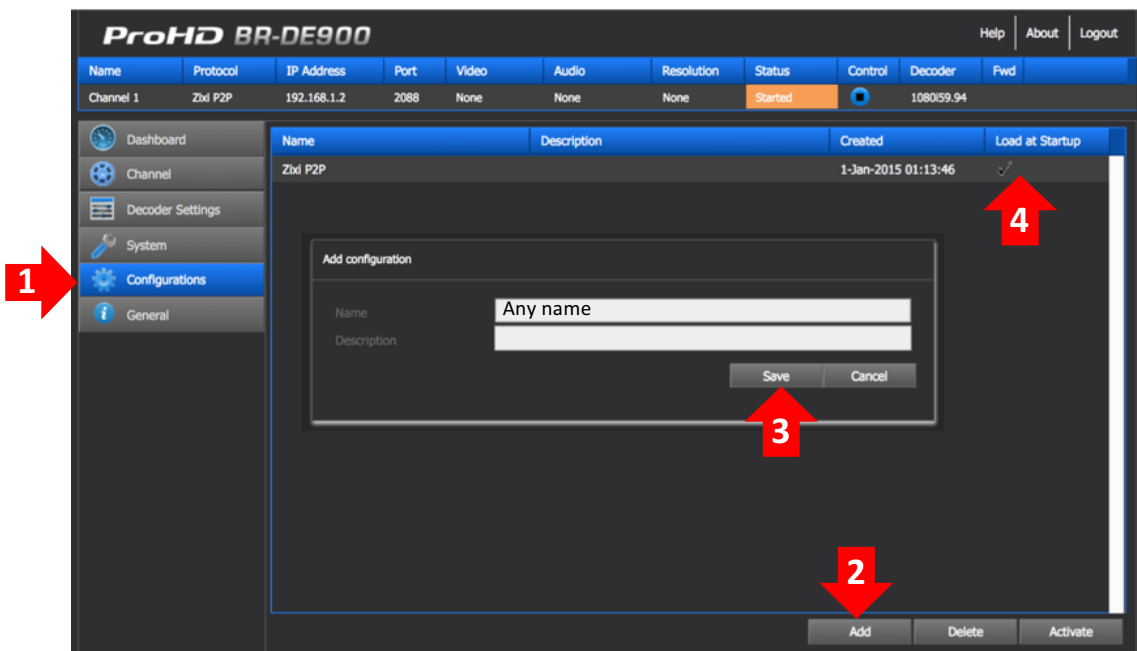
Create New Channel – Zixi P2P Port=2088 (or other), click Add



Highlight new channel (1), click “Select Channel” (2), verify settings (3), Click “Start” (4)



Save existing configuration and enable auto-start after Power OFF/ON:  
Configuration (1) – Add (2) – “Name”- “Save” (3) - Click “Load at Startup” (4)



Now, decoder will start selected configuration automatically after power ON.