

KY-PZ100 Connectivity with TriCaster (using STANDARD)

Required KY-PZ100 Firmware Version: V0101-0093 or later

TriCaster Environment:

Build Number: 2-6-170623 or later (Standard Edition)

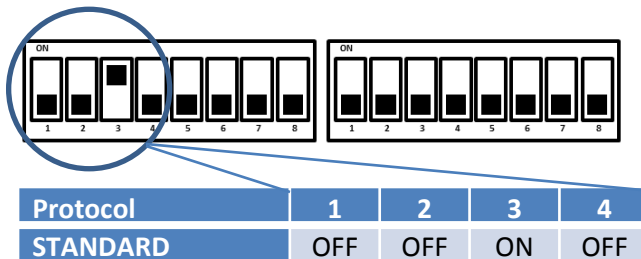
Build Number: 5-1-170626 or later (Advanced Edition)

Windows Environment:

Required Web Browser: Google Chrome (for PTZ firmware maintenance)

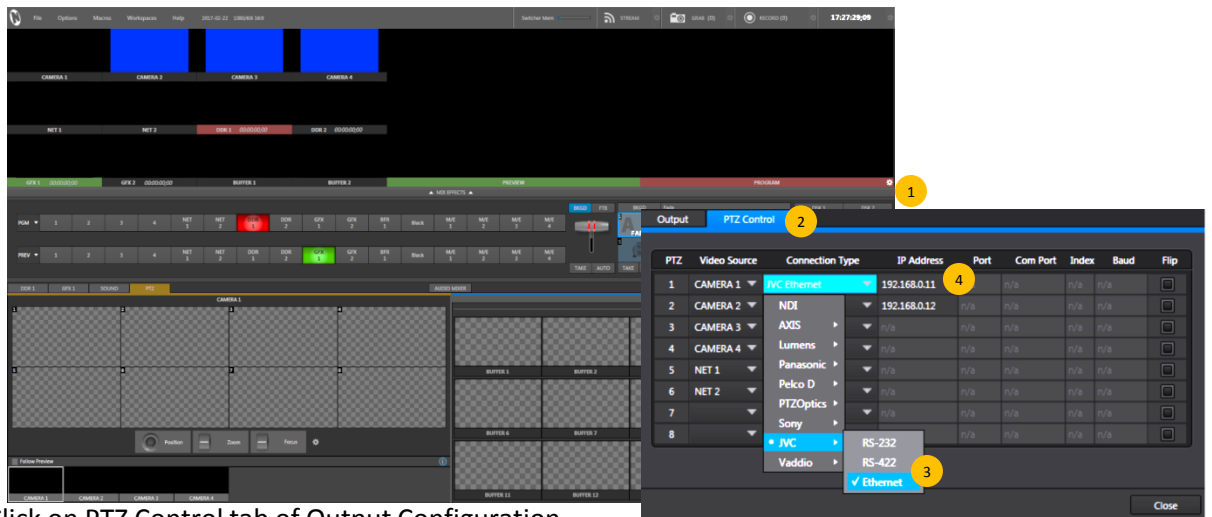
Preparation:

1. Set the DIP SW to STANDARD protocol from the bottom of KY-PZ100 as shown below.



Procedure:

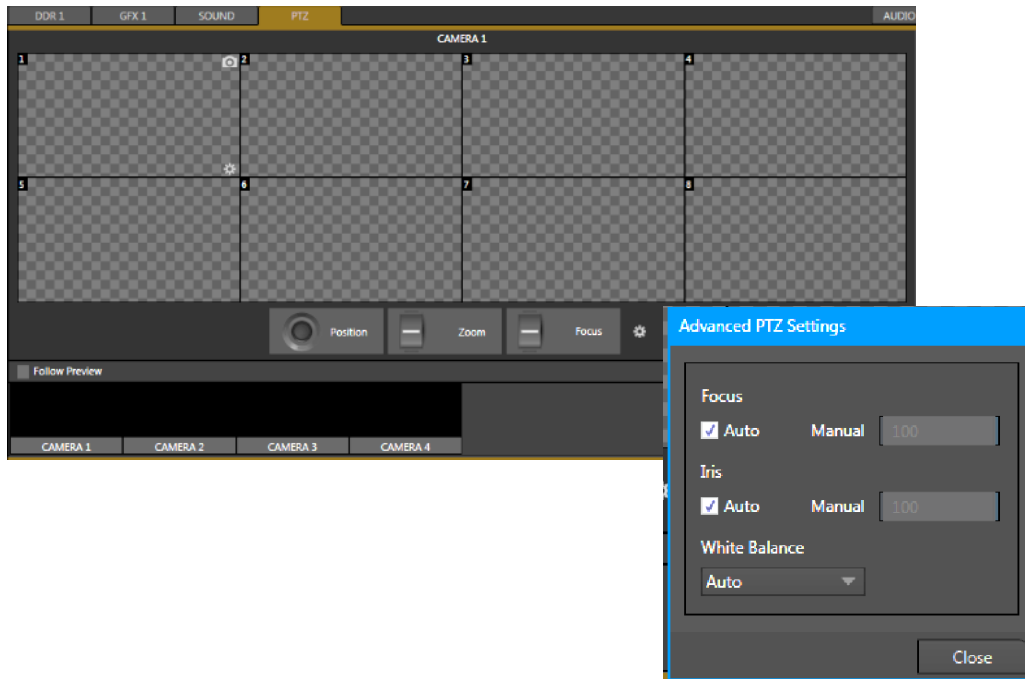
1. Create and start a Session on TriCaster. Click on the Setting button from the PROGRAM banner.



2. Click on PTZ Control tab of Output Configuration.
3. Select Connection Type for CAMERA1 as JVC > Ethernet.
4. Enter the camera IP address and click on CLOSE button.

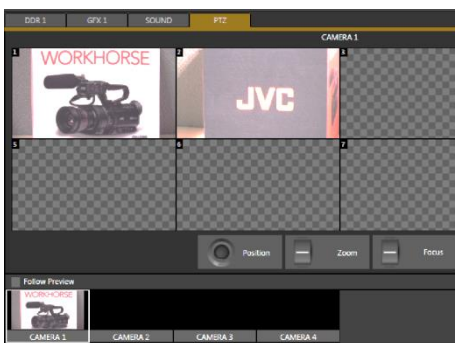
5. Located at the lower left is the PTZ Tab to control 4 cameras.

- Click and drag Position button to move the Pan-Tilt in LRTB position.
- Move the Zoom lever in UP/Down direction to change zoom position.
- Focus, IRIS and White Balance settings are AUTO at default.
- Clicking the Setting button shows Advanced PTZ Settings where Focus, Iris and White Balance can be controlled manually.



6. PTZ Presets

- After composing the shot, click the CAMERA icon on the top left of the memory location to store a thumbnail. It memorizes PTZ and Focus conditions up to 8 presets for each of the 4 cameras.



Note:

Please refer to TriCaster User Manual for more details on networking and streaming functions.